

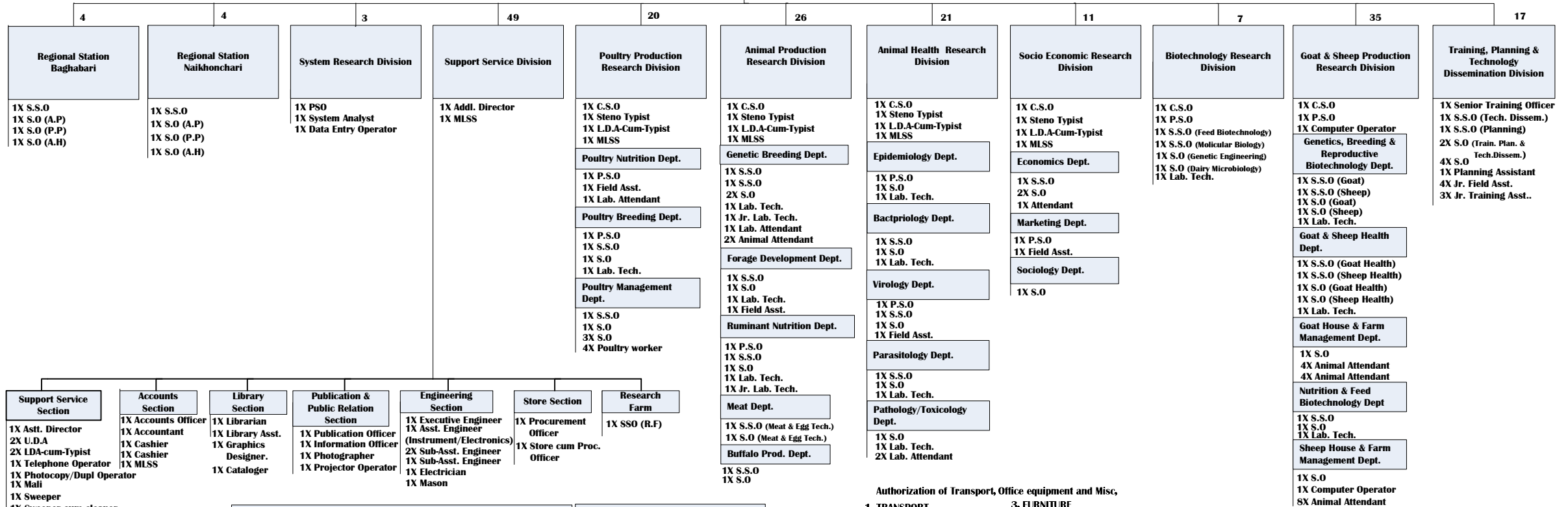


Organogram of Bangladesh Livestock Research Institute

Savar, Dhaka 1341

201 **Director General**

4
1X Director General
1X P.A
1X LDA-cum-typist
1X MLSS



Summary of Manpower

Sl. No.	Name of Post	Number	Sl. No.	Name of Post	Number
1.	DG	1	11.	A.O	1
2.	A.D. (S.S)	1	12.	P.O	1
3.	CSO	6	13.	L.O	1
4.	PSO	9	13.	Librarian	1
5.	SSO	24	Total Class-I		90
6.	STO	1	14.	Total Class-II	6
7.	System analyst	1	15.	Total Class-III	60
8.	Executive Eng.	1	16.	Total Class-IV	45
9.	Asst. Engr.	1	Grand Total		201
10.	S.O	40			
11	Asst. Director	1			

Out-sourcing staff: 49

LABORATORY EQUIPMENTS

a. 97x Laboratory equipments

* List of equipments shown in Appendix-A

Authorization of Transport, Office equipment and Misc,

1. TRANSPORT

- a. 1x Car
- b. 4x Jeep
- c. 1x Truck
- d. 2x Pickup Van
- e. 15x Motor cycle

2. OFFICE EQUIPMENT

- a. 30x Computer
- b. 5x Plain paper copier
- c. 2x Duplicating Machine
- d. 35x Telephone
- e. 5x Generator
- f. 197x Air-cooler
- g. 500,300,200,112.5 KVA sub-station

FARM EQUIPMENTS

- a. 41x Farm equipments

3. FURNITURE

- a. 47x Full Secretariat Table
- b. 5x Half Secretariat Table
- c. 23x Clerical Table
- d. 71x Armed Cushion Chair
- e. 116x Armed Less Cushion Chair
- f. 1x Conference Table
- g. 52x Conference Chair
- h. 40x What not
- i. 2x Wooden Almira
- j. 26x Steel Almira
- k. 25x Steel File Cabinet
- l. 10x Steel Rack
- m. 9x Sofa set